

How to build a Native Bee Home from recycled materials

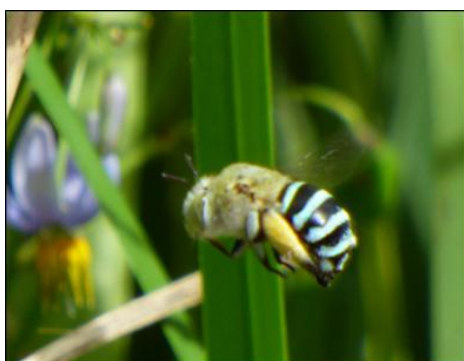
There are over 800 species of native bees in Western Australia and they play a crucial role in the of pollination of native flowers. **To make your own native bee homes, you will need empty food tins and sticks cut to varying sizes from garden pruning or bamboo. Place the sticks in the can and pack them in tight then, your been home is ready to hang.**



Find a small tree or shrub to hang your bee home and plant flowering species to attract your native bee. Some popular pollinating plants include Leschenaultia, Verticordia and Dianella revoluta.



Native bees are predominantly solitary and each female builds her nest without help from worker bees. The two most common to be seen in Perth gardens are the blue banded bee (genus ameglia) and the leaf cutter bee (genus megachile)



Information collated by Canning River Eco Education Centre & LGSWA
Photos permission of Kit Prendergast